

**Tyson
Chicken**
\$7⁴⁹
ea

22-25 oz. Strips or wings.



**Totino's
Pizza Rolls**
\$8⁹⁹
ea

48.8 oz. Assorted.



**Hormel
Chili**
\$2⁴⁹
ea

15 oz cans.

With or
without
beans.



**Hungry-Man
Dinners**
\$3⁹⁹
ea

16 oz. Assorted.

**General Mills
Cheerios**
\$3⁹⁹
ea

14.2-18.2 oz. Assorted.



**Essential Everyday
Dog Food**
2 for \$3

13.2 oz cans. Assorted.



Many
flavors to
choose
from!



**Pringles
Crisps**
2 for \$5

5.5 oz. Assorted.



**Chex
Mix**
\$3²⁹
ea

8 oz bag. Assorted.

**Pure Life
Water**
\$4⁴⁹
ea

24/.5 oz bottles. +CRV



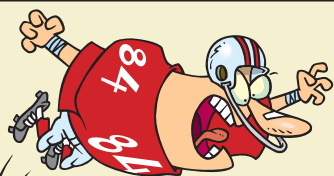
**Pillsbury
Pizza Crust**
\$3⁹⁹
ea

13.8 oz.



AD EFFECTIVE February 05 - 11, 2026

Supplies limited to stock on hand.



Hardware Variety



**Touch Down
Paper Plates**
\$1¹⁹
ea

8 pack, 8 3/4" or 6 7/8".
In Holiday Lane.



**Tidbit
Dish Set**
\$9⁹⁹
ea

5 pc. Stoneware dish set with
metal rack. In Aisle 12A.



**Football
Party Cup**
\$1¹⁹
ea

22 oz. Plastic football themed cup.
In Holiday Lane.



**BBQ
Tool Set**
\$5⁹⁹
ea

3 pieces. Includes fork, knife and
sharpener. In Aisle 12A.

**Kick Off
Napkins**
\$1¹⁹
ea

16 pk. Paper napkins. 12 7/8" X
12 3/4" or 9 3/4" X 9 4/5".
In Holiday Lane.



**Traeger
Wood Pellets**
\$14⁹⁹
ea

20 lb. Premium hardwood blend.
Hickory, apple, mesquite, pecan,
cherry, or signature pellets.
In Aisle 12B.

20 lb.
bag



**I Love Football
Lanyard**
\$1⁹⁹
ea

Key chain lanyard with metal clip.
In Holiday Lane.



**Plastic
Serving Bowl**
\$1⁹⁹
ea

11" clear ribbed design.
In Aisle 7B.



ECHO RECYCLING
760-220-4232

On the Northeast side of the parking lot.

**Open Monday - Saturday
9AM - 4PM**

(Last customer @ 3:50 p.m.)

Aluminum CRV **\$1.65/lb**

#1 Plastic CRV **\$1.33/lb**

Pricing good thru Feb. 11, 2026

LIMITS & MULTIPLE PRICING

Please, unless otherwise indicated, ON AD ITEMS, NO MORE THAN 6 TOTAL (including all flavors or varieties) OF ANY ITEM, PER FAMILY, DURING THE AD PERIOD, AT THE SALE PRICE, except in produce and meat, which are limited to normal retail quantities, or which carry limits specifically stated. Sorry, we must reserve the right to further limit or refuse sales.

MULTIPLE PRICING: When purchasing items in quantities more or less than the multiple stated, the register is built automatically to charge the "each" price times the quantity. (Example: Price of item is 3/\$1. The price of: one = 34¢, two = 68¢, three = \$1, four = \$1.34, five = \$1.68, six = \$2.00).

SERVICES AT CROSSROADS CENTER

**LUCERNE VALLEY MARKET
& HARDWARE (760) 248-7311**

e-mail address:
info@lucernevalleymarket.com
website: lucernevalleymarket.com

WASH N SHOP COIN LAUNDRY

AT THE SERVICE COUNTER In the store

• PAYMENT STATION SCE, Frontier, Verizon

• PACKAGE EXPRESS -- UPS only

• COPIES • FAX SERVICE

FIRST FOUNDATION BANK 248-2717
DR. ASHOK MELVANI M.D. 248-1070

ECHO RECYCLING 220-4232

PRESCRIPTION DELIVERY

Rancho Drugs - 242-4900

Tues. Noon, Wed. & Fri. 1:30pm

**TO KNOW MORE ABOUT THOSE
WHO SPONSOR THIS STORE, SEE
http://thenewlightcls.com**